

# Company Introduction



## 1. Company Introduction

- 1) Company Outline
- 2) Business Range

## 2. Product Introduction

- 1) Raw Materials
- 2) Vacuum Metalizing
- 3) Display
- 4) Semiconductor
- 5) Transfer Robot
- 6) Diamond Tools & Molds
- 7) Electrode & Filament
- 8) Manufacturing Facility

## ■ General Profile

Company name	KBM Corporation
Date of Foundation	11 <sup>th</sup> of November, 2000
President	Mr. Yoo, Byung-Il
Employee	43 Persons
Capital	US\$ 3.9 million
Main Business	Manufacturing & Trading for nonferrous metal products
Web site	<a href="http://www.kbmcorp.co.kr">www.kbmcorp.co.kr</a>

## ■ KBM C.I.

### Knowledge

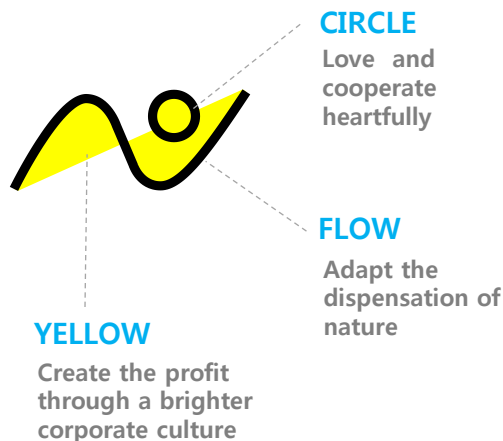
Professional  
Knowledge and  
Experience

### Belief

Trust based on Belief

### Morality

Social Morality



## ■ History



- **2011.03** Founded KBM CHINA
- **2010.09** Won a Presidential Award for a Man of Merit in Excellent Capital Goods
- **2008.12** VM Products of KBM selected as World No. 1 Item (MKE)
- **2008.08** Selected by 2008' Technology Innovation Development Project (SMBA)
- **2008.08** Selected by 2008 'Components & Materials Expert Technology Project (KMAC)
- **2007.12** KBM Japan (TOKYO) had been founded
- **2007.12** Academic - Industrial Cooperation with INHA Technical College
- **2007.06** Certified as a Venture Business Corporation (KIBO)
- **2007.06** Certified as an INNO-BIZ Company (SMBA)
- **2007.06** Selected as a Company Specialized in Components and Materials (MOCIE)
- **2007.02** Awarded an Excellent Exporter Prize
- **2000.11** KBM Corporation has been Founded

## Vacuum Metalizing

Vacuum Metalizing Heating Sources, VM Coil, VM Boat, VM Evaporant, Electron Beam Filaments, Ion Beam Filaments

## Display Luminous Source

Ingot Growing Furnace, Moly Cup, Moly Pin

## Carbide Tools & Diamond Tools

Diamond Tools: Resin, Vitrified, Electroplated, PCD/PCBN/CVD, Tungsten Carbide Tools, Tungsten Wear Parts, Vacuum Brazing Machine

## Raw materials

Tungsten/Nickel/Cobalt Powder, Thermal spray Powder, Tungsten/Moly Parts, Tungsten/Moly Wires, Ferro Alloy

## The Others

Sintering Furnace, Center Pin, Ionizer antistatic Pin, Lamp Filament

## Semiconductor Inspection Equipment

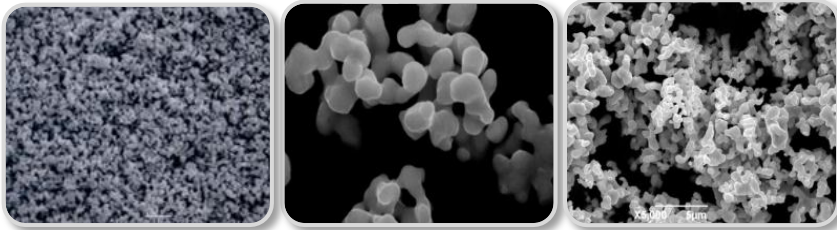
Probe Card(DDI, ASIC, Memory, LED) Probe Pin, Wire Probe, Pogo-Pin, Ion Implant Source Filament

## Transfer Robot

Link-type Single Arm Robot, Water-resistant Double Arm Robot, Direct operating-type Double Arm Robot, Table-type Single Arm Robot, Direct operating-type Double Arm Robot, etc



## ■ Metal Powder (W, Co, Ni)



- Tungsten(W), Cobalt(Co), Nickel(Ni).
- Raw materials of Carbide Alloy & hard-metal Sintered products.
- High Peak density distribution & regular quality.
- Stabilized Product Supply by 'Chongyi'

## ■ Thermal Spray Powder (WC, Co)



- Thermal Spray for Surface Hardening of products
- Assured quality by the affiliation with Inframat, USA.
- High quality WC material
- Nano sized particle can be produced

### ❖ Chongyi Zhangyuan Tungsten



- Established at Guangzhou, China in 1990.
- Stabilized supplier with self-owned 4 tungsten mines & 5 powder, carbide factory.
- Newest Particle Analyzer, SEM & 3 JET Mill equipment assure the particle distribution quality.

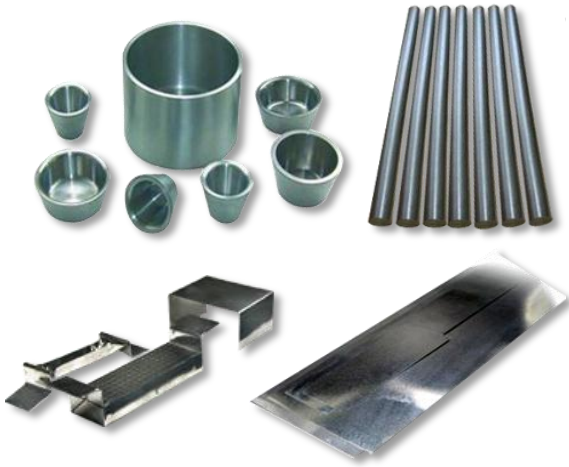
### ❖ GEM



- Established by Science & Technology Committee at Shenzhen, China in 2002.
- Annual Production volume : 10,000t (Cobalt, Nickel Powder, High Purity Carbonated Cobalt, Nickel Alloy etc.)
- Authorized Laboratory by Government & Measurement Research Institute
- ISO 9001, ISO14001 certified



## Pure W/Mo Part



- Used for the material to produce Tungsten & Moly sheets, rods, rectangular materials, crucibles.
- Sheets & rods can be easily processed and has excellent heat feature.
- Used for electrodes, lamp material, heat-resistance material, special steel.

## W/Mo Wire



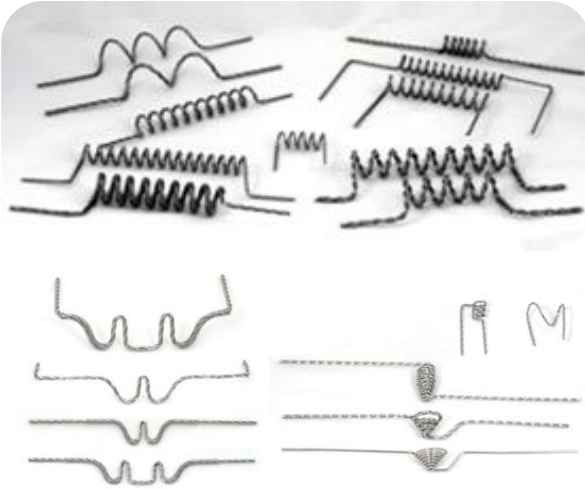
- Tungsten(W), Molybdenum(Mo)
- For Manufacturing of Lamp Filament
- For Manufacturing of VM Filament
- Low crack, can be easily-processed, good life span

## Ferro Alloy



- Ferro Mo : Used for manufacturing strong wear-resistance products.
- Ferro V : Used for manufacturing in case the ductility is needed for special steel.
- Ferro Si : deoxidation, desulfurization and composition for ingot steel.

## Vacuum Metalizing Coil



- Filament for the heat source of Vacuum metalizing
- Resistance Heating, Electron beam metalizing
- Surface treatment of automotive Lamp, mobile phone case
- Surface treatment of optical products such as Infrared Filter, Camera lens

## Electron & Ion Beam Filament



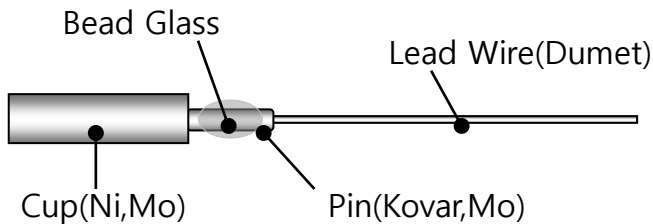
- Used in Electron Beam Vacuum Metalizing.
- Used for surface treatment of optical products such as infrared filter, camera lens and for the shield of plasma display and also for film condenser coating.

## Evaporation Boat & Evaporant



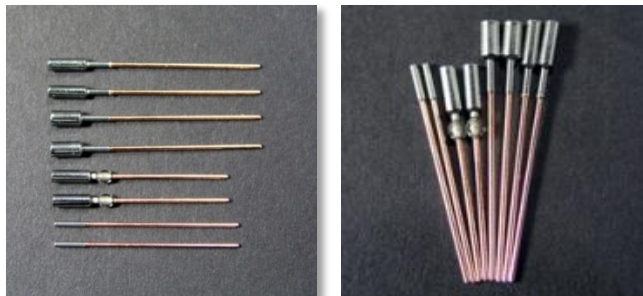
- Evaporant : Becoming thin-film formation on the surface of subject during vacuum metalizing process.
- Evaporation Boat : Heat source or heat treatment for Vacuum Metalizing.

## CCFL Electrode Parts

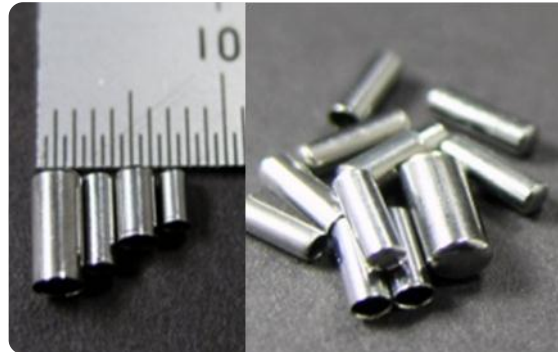


### Composition

- Cup+Pin+Lead Wire
- Cup : Molybdenum, Nickel
- Pin : Molybdenum, Tungsten, Kovar
- Lead Wire : Dumet, Manganese/Nickel

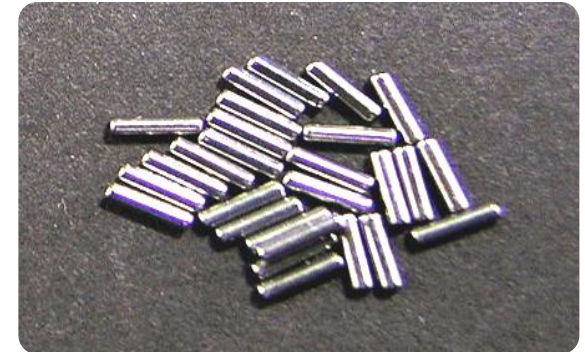


## Moly Cup



- made in the shape of a cup to maximize the area of emission.
- Excellent thermal features & high brightness
- Good quality with fine material
- Quality control through inspection of each unit

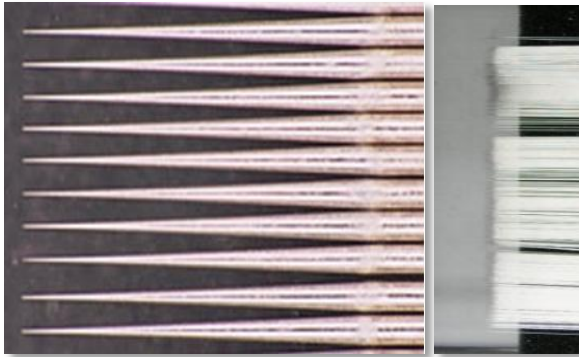
## Moly Pin



- Used to connect a cup of CCFL electrode & lead wire
- Used high quality moly wire
- Zero-defective through crack inspection of each unit
- Highly effective by thermal feature compared with Kovar Pin.



## Probe Pin



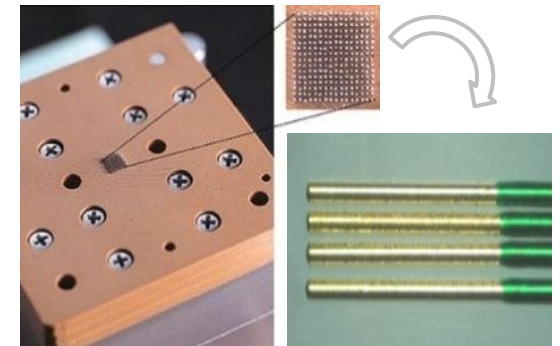
- A core part of the probe card used in semiconductor wafer inspection; probes semiconductor chips using electric signals in direct contact with the semiconductor's wafer bump.

## Pogo-Pin



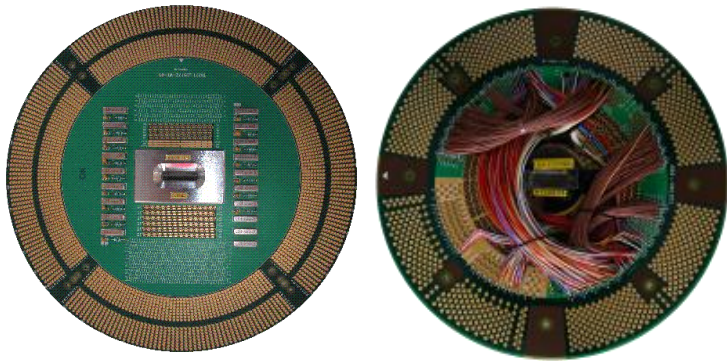
- A pin that electrically connects the terminal of the semiconductor device and the testing equipment's pad; is used in testing camera modules, display modules, image sensors, LCD inspecting devices, etc.

## Wire Probe



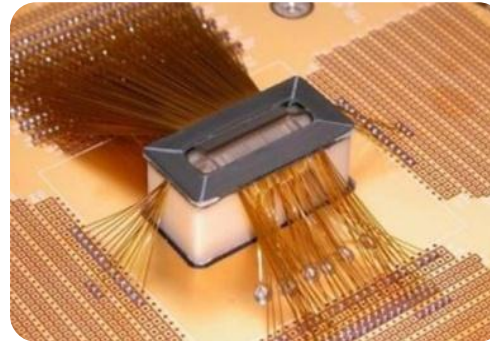
- A probe pin used in COF film inspecting tools.
- High pin pressure
- Stable electric resistance
- Long life span (can be used over 1 million times)

## Probe Card



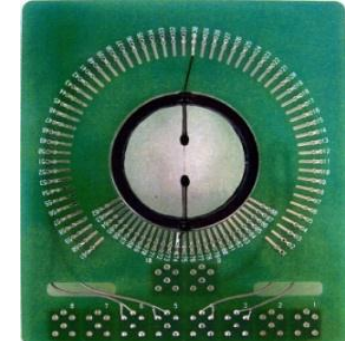
- Probe Card is a semiconductor inspection part for Wafer Test Process which is inspecting whether hundreds of IC Chips on the Wafer have defectives or not.

## DDI Probe Card



- Used for inspection of IC(DDI) for LCD operation
- Mid, Large size of TFT LCD for Laptop PC, Small size of TFT LCD for mobile phone, STN LCD for color.

## LED Probe Card



- A probe card used to inspect each chip before package-assembling the LED chips.

## Link-type Single Arm Robot

Model : PR1111-200-MP-RT



## Parallel link-type Single Arm Robot

Model : EV2250



## Water-resistant Double Arm Robot

Model : WR2154-300-RM



## Direct operating-type Double Arm Robot

Model : ER2540-300



## Direct operating-type Double Arm Robot

Model : LR31000-600



## Direct operating-type Double Arm Robot

Model : HR71000-1500



## Table-type 8 inch Sorter

Model : SYAR100-00350-0



## Table-type Single Arm Robot

Model : AR1240-200



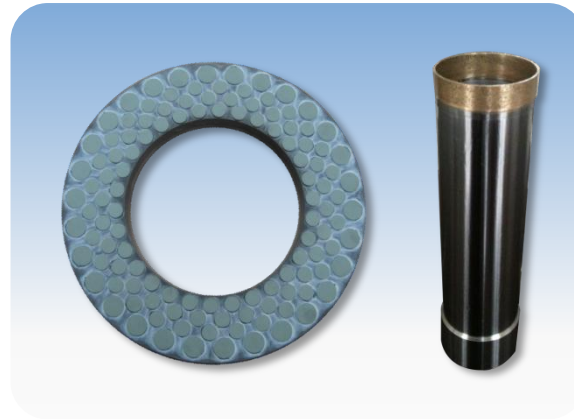
## ■ Diamond Tools

### Resin Bonded Wheel



- Used widely in grinding tungsten carbide, ceramics, HSS, ferrite and other hard metals.
- Great for grinding, in both wet and dry methods.
- Highly efficient, used to grind various shapes, including flat surfaces, cylinders, interiors, etc.
- Applied to various areas of processing.

### Vitrified Bonded Wheel



- Used to grind high-precision mechanical parts (such as LED wafers, bearings, gears, mechanical tools and molds) as well as semiconductors, ceramics and PCD/PCBN cutting tools.
- Highly efficient and suitable for grinding items that require durability.
- Ensures longer life spans and higher efficiency compared to resin- or metal-bonded diamond wheels.

### Electroplated Wheel



- Used to grind non-iron metals, ferrite, hardened steel, FRP, ceramics and alloy steel.
- Easily adaptable to various shapes of tools.
- Cuts much better than resin- or vitrified bonded dia-wheels
- Reasonable price & easy to be produced in various shape.



## PCD/PCBN/CVD Tools



- Used in various areas of processing that cannot be done by hard-metal or ceramic tools or finishing tools of various shapes and materials, including non-iron metals and other metals.
- Much superior quality and durability than other metal tools.

## Vacuum Brazing Machine



- To be used for welding between super hard materials and T/C ceramics, all kind of Diamonds.
- No physical change
- Much higher welding strength and easy to braze.



## Tungsten Wear Parts



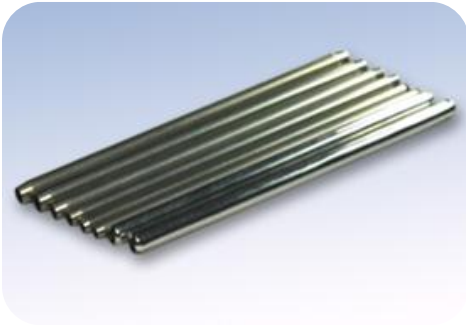
- Used to produce various hard-metal tools and applied to the automotive and semiconductor industries.
- Stable quality with high technology
- Using excellent quality WC materials.
- Customized shapes and materials are available.

## Other Molds



- Used in producing sintered parts, such as the auto engines, transmissions, oil pumps and ferrite magnates.
- Precise processing using high-quality equipment.
- Refined surface and thermal processing based on decades of experience.
- Using optimal materials for each mold.

## Center Pin



- Used as a safety kit(fire extinguisher) for LI-ION cylindrical electric cells.
- Variety of external diameters and lengths are applicable.

## Discharging Pin



- Used as an antistatic electrode in static-dissolving ionizers.
- High antistatic, made with pure tungsten rods.
- High and consistent quality.
- Fine tip & taper processing

## Ion Implant Filament



- A filament used in the ion implant process.
- High purity Tungsten Material
- Strict dimension control
- Good lifespan with heat treatment

## Lamp Filament



- Filaments are found in fluorescent and incandescent lamps, as well as halogen lamps for automobiles, lamps for photocopiers and semiconductor equipment lamps.
- High, consistent quality using pure tungsten wires.

## Ingot Growing Furnace



- Silicon Ingot Growing Furnace: a facility to grow poly silicon which is used for the semiconductor wafer & solar cell wafer.
- Sapphire Ingot Growing Furnace : used when growing Sapphire( $Al_2O_3$ -Single Crystal) which is used for LED wafer.
- High production efficiency brings regular quality ingot production.

## Sintering Furnace



- Used in sintering alloy products, vacuum heat treatment, tempering .
- Used in sintering and dewaxing of stainless, hot-resistance alloy, high specific gravity alloy.
- Superior in heating and cooling function, raising the product quality, improving the production time and efficiency.

## Vacuum Metallizing Equipment



- Used in giving decorative and glossy effects such as mainly to fashion lamp reflectors, glasses, metal, plastic, electronic parts and car accessories. And also it is used vastly for coating of Al, Cr and so on.
- Economical and low metalizing cost.
- Fully automated process.

# Thank You

Your Best Business Partner !

